



Original Euro Profiles for Windows & Doors  
Designed for Tropical Excellence





## ORM ALUMINIUM SYSTEM

“ORIGINAL”, “RELIANCE” and “MAGNIFICENT” are the design concepts of our doors and windows. Having been manufactured to suit the tropical climate of Asia, where high heat, humidity, rain and insects are the norm, precise engineering calculations make ORM doors and windows superior, allowing them to be made with extra width and height. As the first products in Thailand to be certified from testing **at the highest standards equivalent to Level 5 TIS 744-2563 and TIS 829-2563**, these products are capable of withstanding storms. Not only that, the robust and non-flexing nature of the aluminium framing provides effective protection against outdoor elements, thereby facilitating a peaceful atmosphere in every part of the home and allowing you to rest and live in safety and comfort.



FEEL THE ORIGINAL, TRUST THE RELIABLE, LIVE THE MAGNIFICENT.

ORM Aluminium is manufactured by Thai Metal Aluminium Co., Ltd., a leading manufacturer of aluminium, whose quality assurance and quality control systems have been established to ensure that only the best pieces are manufactured with precision, smooth-surfaces, and no-peel-guaranteed coating. This makes the aluminium effective for door and window assemblies. It is also free of carcinogens, ensuring confidence in quality and safety in every type of use.



THAI METAL  
ALUMINIUM  
タイメタルアルミ



Non-Chrome  
Technology



No lead &  
Mercury



10 Years Shield





## ORM ALUMINIUM SERIES

### ASIAN TROP

Simple but modern designs with slim frames, spacious, and a comfortable feel inside the home, this series is available at thicknesses of 1.2 mm and 1.5 mm and frame sizes of 90 mm and 101.6 mm.

### PANO SUIT

Large frames add depth and dimension, and also support thick and heavy glass panels. This series is available in aluminium thicknesses of 1.5 mm and 2.0 mm and frame sizes of 90 mm and 101.6 mm.





TEST ITEM	ASIAN TROP		PANO SUIT	
	CASEMENT & AWNING WINDOW	SLIDING SYSTEM	CASEMENT & AWNING WINDOW	SLIDING SYSTEM
WATER TIGHTNESS	300 Pa	300 Pa	300 Pa	300 Pa
AIR CLASS	±300 Pa	+125 Pa / -75 Pa	±300 Pa	±300 Pa
WIND RESISTANCE	±2000 Pa	±2000 Pa	±2000 Pa	±2000 Pa
PROOF LOAD TEST	±3000 Pa	±3000 Pa	±3000 Pa	±3000 Pa
OPERATION FORCE TEST	≤ 80 N	≤ 80 N	≤ 80 N	≤ 90 N

## ORM DOORS & WINDOWS

Designed appropriately according to engineering principles.

### Exterior

Outdoor areas are exposed to wind, rain and dust, so doors and windows need to be leakproof against water, air, insects, as well as noise. For theft prevention, the products also feature a multi-point lock system. Exterior panels include the following:

- Sliding door and window system
- Casement and awning window system
- Casement door system
- Fixed light system
- Folding system
- Curtain wall system







### Interior

For roofed or indoor areas that are not directly exposed to wind, water or dust, some doors can be used to divide or partition the house's interior. Either there are railings that have been designed to be level with the floor or there are no railings at all, which is suitable for houses with young children or that need to use a wheelchair, since it eliminates worries about tripping over while making the house appear attractive. Presented below are the interior panels:

- Low-threshold sliding doors
- Top-hung sliding doors (no threshold)
- Interior casement doors
- Swing doors





PRODUCT ITEMS	MAXIMUM HEIGHT	MAXIMUM WIDTH	QUANTITY PER SET	
			MIN	MAX
 <div>SLIDING SYSTEM : ASIAN TROP</div>	3300 (75 mm sash)	1100 (75 mm sash)	2-6 panels per set	
 <div>SLIDING SYSTEM : PANO SUIT</div>	4000 (80 mm sash)	1200 (80 mm sash)	2 panels-unlimited	
 <div>CASEMENT &amp; AWNING WINDOW : ASIAN TROP</div>	2000	1000	1 panel-Unlimited	
 <div>CASEMENT &amp; AWNING WINDOW : PANO SUIT</div>	2700	1000	1 panel-unlimited	
 <div>CASEMENT DOOR : FRONTURA</div>	3300	1100	1-2 panels per set	
 <div>CASEMENT DOOR : FRONTURA GRAND</div>	3300	1100	1-2 panels per set	
FIXED LIGHT SYSTEM : ASIAN TROP	3000	1000	1 panel-unlimited	
FIXED LIGHT SYSTEM : PANO SUIT	4000	1000	1 panel-unlimited	
FOLDING SYSTEM	3300	900	2 panels-unlimited	
CURTAIN WALL SYSTEM : STICK WALL	4600	1200	1 panel-unlimited	
LIGHT TRACK SLIDING DOOR	3300	1100	1-6 panels per set	
AIR TRACK SLIDING DOOR	3300	1100	1-4 panels per set	
CASEMENT DOOR : FRONTURA	3300	1100	1-2 panels per set	
SWING DOOR	3300	1100	1-2 panels per set	

FRAME DEPTH	SILL HEIGHT	GLASS THICKNESS	GLASS GROOVE	ALUMINIUM THICKNESS	INSECT SCREEN SYSTEM	MULTIPOINT
90 mm / 101.6 mm (4")	30 / 50 mm	5-12 mm	9.5-12.7 mm	1.2 / 1.5 / 2.0 mm	Yes	Yes
64.8 mm / 101.6 mm (4")	50 mm	5-22 mm	9.5 / 13.4 / 22 mm	1.5 / 2.0 mm	Yes	Yes
90 mm / 101.6 mm (4")	25 mm	5-15 mm	12.6 / 16.9 mm	1.2 / 1.5 mm	Yes	Yes
90 mm / 101.6 mm (4")	25 / 44.45 mm	5-24 mm	12.7 / 26 mm	1.5 / 2.0 mm	Yes	Yes
90 mm / 101.6 mm (4")	44.45 mm	5-12 mm	12.6 mm	1.5 / 2.0 mm	Yes	Yes
90 mm / 101.6 mm (4")	25 / 44.45	5-24 mm	12.7 / 26 mm	1.5 / 2.0 mm	Yes	Yes
90 mm / 101.6 mm (4")	25 mm	5-15 mm	12.7 / 16.9 mm	1.2 / 1.5 mm	-	-
90 mm / 101.6 mm (4")	25 / 44.45 mm	5-24 mm	12.7 / 26 mm	1.5 / 2.0 mm	-	-
90 mm / 101.6 mm (4")	5.5 / 42 mm	5-10 mm	12.7 mm	1.5 mm	Yes	Yes
119.6 / 150 mm	63.5 mm	5-15 mm	17 mm	2-2.5 mm	-	-
90 mm / 101.6 mm (4")	6.85 mm	5-12 mm	9.5-12.7 mm	1.2 / 1.5 / 2.0 mm	Yes	Yes
101.6 mm (4")	-	5-12 mm	12.7 mm	1.5 mm	Yes	Yes
90 mm / 101.6 mm (4")	44.45 mm	5-12 mm	12.6 mm	1.5 mm	Yes	Yes
101.6 mm (4")	13.5 mm	5-12 mm	12.6 mm	1.5 mm	-	Yes



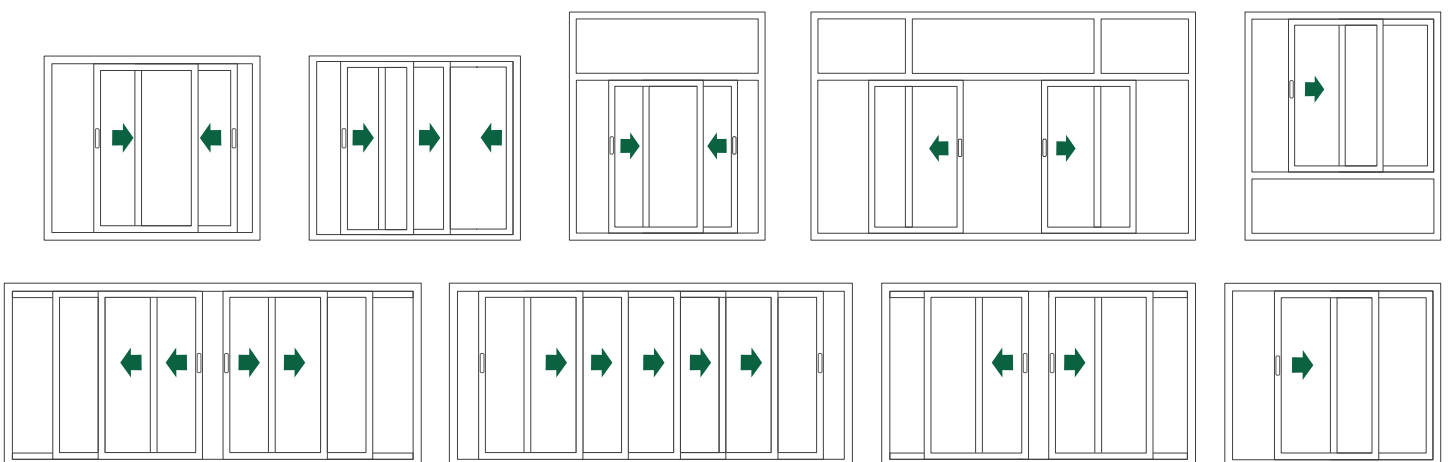






Corner Sliding Door systems have been designed to neatly fit into corners and create suitable rest areas for the home.

## DESIGN OPTIONS







## SLIDING SYSTEM

Upgrade your door and window frames for a full view of your surroundings. Engineered with precision, these systems are strong and robust and are suitable for every weather condition in Thailand. Installable together with fixed lighting around the panels to create a clear and spacious atmosphere on both sides, the sliding panels have also been designed to fit in 90-degree corners and contain safety features like the single-lock and multi-point lock systems to prevent lifting. Moreover, the systems support the installation of digital door locks to accommodate every usage requirement through wide-ranging railing types, such as the double-railing and triple-railing designs, to suit both outdoor and indoor uses.

### ORM ALUMINIUM SERIES

#### ASIAN TROP

Tailor-designed just for the tropical climate, this series offers better protection against water leaks and wind than regular Thai standard systems. This series is available in thicknesses of 1.2, 1.5 and 2.0 mm and frame widths of 90 and 101.6 mm.

#### PANO SUIT

Larger frames add dimension while supporting extra-large panels for a panoramic view. This series is available in thicknesses of 1.5 and 2.0 mm and a frame width of 101.6 mm. Supporting a maximum glass thickness of 22 mm, the series also features an unlimited number of panel additions (per railing).

### SPECIFICATION

	ASIAN TROP	PANO SUIT
MAXIMUM HEIGHT	3300 mm (75 mm sash)	4000 mm (80 mm sash)
MAXIMUM WIDTH	1100 mm (75 mm sash)	1200 mm (80 mm sash)
QUANTITY PER SET (Min / Max)	2 / 6 leaves	2 / Unlimited leaves
FRAME DEPTH	90 / 101.6 mm	64.8 / 101.6 mm
SILL HEIGHT	30 / 50 mm	50 mm
GLASS THICKNESS	5-12 mm	5-22 mm
GLASS GROOVE	9.5-12.7 mm	9.5 / 13.4 / 22 mm
ALUMINIUM THICKNESS	1.2 / 1.5 / 2.0 mm	1.5 / 2.0 mm
INSECT SCREEN SYSTEM	Yes	Yes
MULTI POINT LOCK	Yes	Yes
DIGITAL DOOR LOCK	Yes	Yes
SEALANT GAP	3-5 mm / Side	3-5 mm / Side

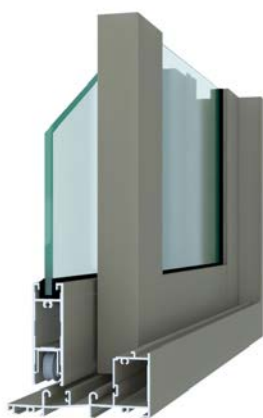
\*For panels exceeding 2.30 meters in height, we recommend adding stiffeners to enhance strength and stability.





## SLIDING SYSTEM (ASIAN TROP SERIES)

The meticulously designed slim panel frames not only enhance beauty, but also boost confidence in protecting your home from the tropical climate, whether during heavy rains or strong winds. The wheel-in-railing system in particular helps to prevent derailment. Simultaneously, felt is installed around each panel to prevent uplift while helping to reduce outside noise. Moreover, the felt helps to filter out harmful particulate matter. With a maximum height of 3.3 meters, these systems can be installed in any number from 2 to 6 panels, with available panel widths of 90 mm and 101.6 mm and frame sizes of 53, 65 and 75 mm. They can help create a peaceful and safe environment for the whole family.



### PERFORMANCE

WIND RESISTANCE \_\_\_\_\_ 2000 Pa  
 WATER TIGHTNESS \_\_\_\_\_ 300 Pa  
 AIR CLASS \_\_\_\_\_ +120/-75 Pa

### SPECIFICATION

### ASIAN TROP

MAXIMUM HEIGHT \_\_\_\_\_ 3300 mm (75 mm sash)  
 MAXIMUM WIDTH \_\_\_\_\_ 1100 mm (75 mm sash)  
 QUANTITY PER SET (Min / Max) \_\_\_\_\_ 2 / 6 leaves  
 FRAME DEPTH \_\_\_\_\_ 90 / 101.6 mm  
 SILL HEIGHT \_\_\_\_\_ 30 / 50 mm  
 GLASS THICKNESS \_\_\_\_\_ 5-12 mm  
 GLASS GROOVE \_\_\_\_\_ 9.5-12.7 mm  
 ALUMINIUM THICKNESS \_\_\_\_\_ 1.2 / 1.5 / 2.0 mm  
 INSECT SCREEN SYSTEM \_\_\_\_\_ Yes  
 MULTI POINT LOCK \_\_\_\_\_ Yes  
 DIGITAL DOOR LOCK \_\_\_\_\_ Yes  
 SEALANT GAP \_\_\_\_\_ 3-5 mm / Side



Water  
Proof



Wind  
Loads



Sound  
Proof



Secured  
Lock



## SLIDING SYSTEM (PANO SUIT SERIES)

Providing a wider view along with a superior living experience, these larger panels have a maximum height of 4 meters and as many panels can be added in each railing as desired.

Designed based on a true understanding of the tropical climate, this series offers excellent protection against water, wind, particulate matter, and outside noise, while keeping things quiet when opening and closing. Supporting a maximum glass thickness of 22 mm, this series is available in panel widths of 64.8 mm (2-railing) and 101.6 mm (3-railing) and frame sizes of 65 and 80 mm, to let you experience nature’s beauty from the comforts of your home.

### PERFORMANCE

WIND RESISTANCE	2000 Pa
WATER TIGHTNESS	300 Pa
AIR CLASS	300 Pa

### SPECIFICATION

### PANO SUIT

MAXIMUM HEIGHT	4000 mm (80 mm sash)
MAXIMUM WIDTH	1200 mm (80 mm sash)
QUANTITY PER SET (Min / Max)	2 / Unlimited leaves
FRAME DEPTH	64.8 / 101.6 mm
SILL HEIGHT	50 mm
GLASS THICKNESS	5-22 mm
GLASS GROOVE	9.5 / 13.4 / 22 mm
ALUMINIUM THICKNESS	1.5-2.0 mm
INSECT SCREEN SYSTEM	Yes
MULTI POINT LOCK	Yes
DIGITAL DOOR LOCK	Yes
SEALANT GAP	3-5 mm / Side



Water  
Proof



Wind  
Loads



Sound  
Proof



Secured  
Lock





## INSECT SCREEN SYSTEM

Designed to enhance comfort and effectively guard your home against insects, the screen systems allow seamless installation alongside sliding panel systems to deliver uninterrupted beauty.

To meet a variety of usage requirements, many types of screens are available:

- **Standard sliding screen**

Suitable for regular doors and windows, this type of screen is easy to use and slides smoothly without interruption, enabling you to fully open the door for some fresh air without worrying about insects.

- **Sliding screen with handles**

Especially designed for larger panels to offer greater comfort when sliding to open and close, the handles help support secure directional control to make use of larger panels easier and more flexible.

- **Safety screen**

The wire mesh that helps to enhance the safety of your home is manufactured from high-quality stainless steel, so the screen resists impact and cannot be easily cut or pried open, while still offering excellent ventilation and a great view of the outside. Delivering equivalent protection against insects as ordinary wire screens, this product is great for homes that require safety in the absence of protective steel frames, while also making the home more elegant.











# CASEMENT & AWNING WINDOW

Designed for seamless beauty and superior performance, as well as strength and durability, these products have passed testing equivalent to the highest level of TIS 744-2563 to ensure better protection. Even during a hurricane, there is excellent protection against water, wind, dust, insects and noise, and the products can be designed into double open windows without a dividing frame line in the middle to provide a wide viewing angle while smoothly connecting the interior and exterior spaces together.

Especially when installed with fixed lighting panels, the room can appear more open, spacious, and comfortable with full exposure to natural light. Available for installation in both the single-panel and double-panel types, the products support both single-lock and multi-point lock systems.

## ORM ALUMINIUM SERIES

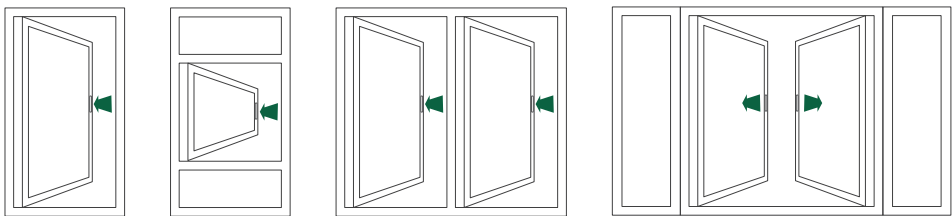
### ASIAN TROP

The aluminium is 1.2 mm and 1.5 mm thick, with slim but strong framing, making this series suitable for every home style, and supports both single-lock and multi-point lock systems for security and seamless elegance.

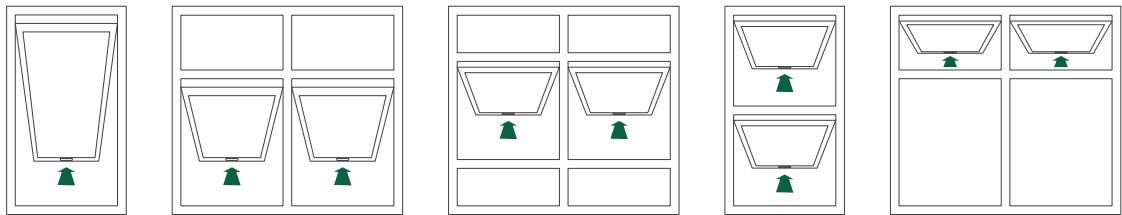
### PANO SUIT

The aluminium is 1.5 mm thick to support larger panels with frames and panel frames available in 2 sizes and feature a multi-point lock system for distinctive beauty and comprehensive functionality.

## DESIGN OPTIONS



Examples: Casement Designs



Examples: Awning Designs

## SPECIFICATION

	ASIAN TROP	PANO SUIT
MAXIMUM HEIGHT	2000 mm	2700 mm
MAXIMUM WIDTH	1000 mm	1000 mm
QUANTITY PER SET (Min / Max)	1 / Unlimited leaves	1 / Unlimited leaves
FRAME DEPTH	90 mm / 101.6 mm	90 mm / 101.6 mm
SILL HEIGHT	25 mm	25 / 44.45 mm
GLASS THICKNESS	5-15 mm	5-24 mm
GLASS GROOVE	12.6 / 16.9 mm	12.7 / 26 mm
ALUMINIUM THICKNESS	1.2 / 1.5 mm	1.5 / 2.0 mm
INSECT SCREEN SYSTEM	Yes	Yes
MULTI POINT LOCK	Yes	Yes
SEALANT GAP	3-5 mm / Side	3-5 mm / Side





## CASEMENT & AWNING WINDOW

### (ASIAN TROP SERIES)

Convenient and comfortable with flexibility, along with great ventilation, the superior effectiveness and durability of this series is assured. Even during heavy storms, the window panels will remain strong and secure without emitting any howling wind sounds or flexing to the point of damage. Water leaks are also no longer a problem, since the trim has been designed to prevent rain. Frames are available in different widths (90 mm or 101.6 mm), along with appropriately sized panel frames (50 mm or 43 mm), in addition to featuring a multi-point lock system and supporting a maximum panel height of 2 meters and a glass thickness of 15 mm to provide just the right level of convenience, comfort and security.



### PERFORMANCE

WIND RESISTANCE	_____	2000 Pa
WATER TIGHTNESS	_____	300 Pa
AIR CLASS	_____	300 Pa

### SPECIFICATION

### ASIAN TROP

MAXIMUM HEIGHT	_____	2000 mm
MAXIMUM WIDTH	_____	1000 mm
QUANTITY PER SET (Min / Max)	_____	1 / Unlimited leaves
FRAME DEPTH	_____	90 mm / 101.6 mm
SILL HEIGHT	_____	25 mm
GLASS THICKNESS	_____	5-15 mm
GLASS GROOVE	_____	12.6 / 16.9 mm
ALUMINIUM THICKNESS	_____	1.2 / 1.5 mm
INSECT SCREEN SYSTEM	_____	Yes
MULTI POINT LOCK	_____	Yes
SEALANT GAP	_____	3-5 mm / Side



Water  
Proof



Wind  
Loads



Sound  
Proof



Secured  
Lock



## CASEMENT & AWNING WINDOW (PANO SUIT SERIES)

The Pano Suit series offers a more open feel with large panels up to 2.7 meters in height that can receive natural sunlight and breeze all day long while preventing external water, wind, dust, insects and noise and eliminating worries about leaks from the panel joints. Two frame widths are available (90 mm and 101.6 mm) with panel frame sizes of 75 mm to accommodate a wide variety of functions and impeccably meet every design requirement.

### PERFORMANCE

WIND RESISTANCE	2000 Pa
WATER TIGHTNESS	300 Pa
AIR CLASS	300 Pa

### SPECIFICATION

#### PANO SUIT

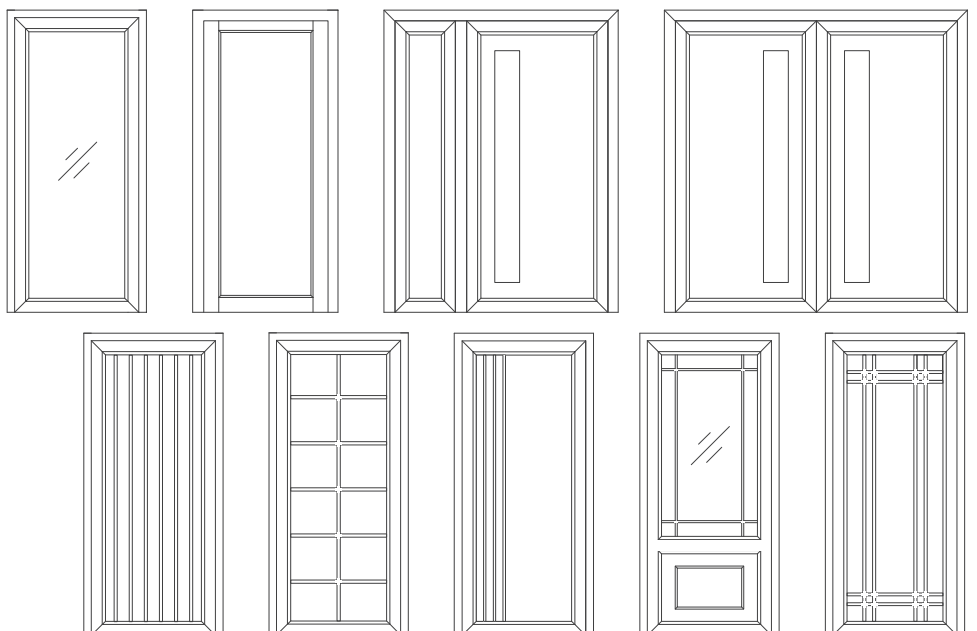
MAXIMUM HEIGHT	2700 mm
MAXIMUM WIDTH	1000 mm
QUANTITY PER SET (Min / Max)	1 / Unlimited leaves
FRAME DEPTH	90 mm / 101.6 mm
SILL HEIGHT	25 / 44.45 mm
GLASS THICKNESS	5-24 mm
GLASS GROOVE	12.7 / 26 mm
ALUMINIUM THICKNESS	1.5 / 2.0 mm
INSECT SCREEN SYSTEM	Yes
MULTI POINT LOCK	Yes
SEALANT GAP	3-5 mm / Side







## DESIGN OPTIONS







## CASEMENT DOOR

Perfectly fulfill every design requirement through simplicity and effective protection from outdoor elements. Have confidence in the peace and privacy of your own home. With many available designs, including aluminium or glass panels, more natural sunlight can enter to make areas appear more spacious. Also, doors with Georgian bars can help enhance dimension and give a classic feel to the home. Both single-panel and double-panel types are available for installation, and the opening direction can be customized as appropriate. The products can be installed indoors without requiring a bottom threshold. To install in an exterior area, a threshold can be added. Otherwise, select an appropriate floor level (floor drop) to enable smooth and uninterrupted opening and closing of the door. Both single-lock and multi-point locking systems are available with support for digital door lock system full-featured functionality.

### Products are divided into 2 series:

#### FRONTURA

The aluminium is 1.5 mm thick for a slim but sturdy framing to suit every home style. Available in 2 frame widths and panel sizes, glass can be installed with a maximum thickness of 5-12 mm, in addition to featuring either a single-point lock or multi-point lock system for safety and beauty.

#### FRONTURA GRAND

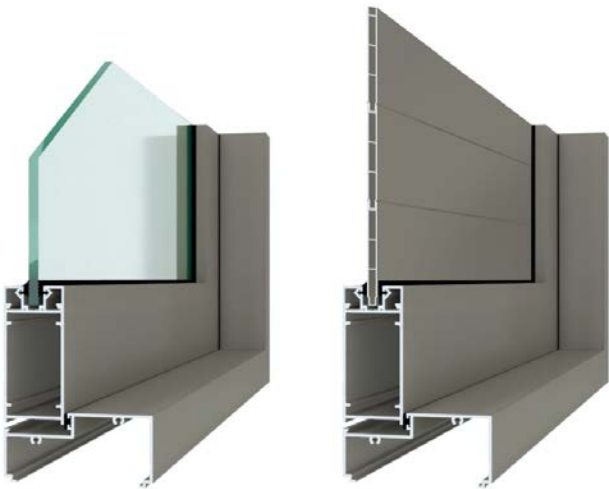
The aluminium is 1.5-2 mm thick to support glass thickness ranging from 5 mm to 24 mm for convenience, comfort, and safety, while featuring the multi-point lock system for distinctive elegance and comprehensive functionality.

SPECIFICATION	FRONTURA	FRONTURA GRAND
MAXIMUM HEIGHT	3300 mm	3300 mm
MAXIMUM WIDTH	1100 mm	1100 mm
QUANTITY PER SET (Min / Max)	1 / 2 leaves	1 / 2 leaves
FRAME DEPTH	90 mm / 101.6 mm	90 mm / 101.6 mm
SILL HEIGHT	44.45 mm	25 / 44.45 mm
GLASS THICKNESS	5-12 mm	5-24 mm
GLASS GROOVE	12.6 mm	12.7 / 26 mm
ALUMINIUM THICKNESS	1.5 / 2.0 mm	1.5 / 2.0 mm
INSECT SCREEN SYSTEM	Yes	Yes
MULTI POINT LOCK	Yes	Yes
DIGITAL DOOR LOCK	Yes	Yes
SEALANT GAP	5 mm / Side	5 mm / Side



## CASEMENT DOOR (FRONTURA SERIES)

Deliver the best first impression through an ornately designed front door that offers elegance, charm, and a unique identity to your home. Panels are manufactured from high-quality aluminium for durability and sturdiness with effective prevention of outdoor disturbances, and when opened, cool air can circulate throughout the entire interior all day long. Being easy to use and matching well with every function, fixed light panels can be installed around the entire door for maximum brightness. The doors are designed with a maximum height of 3.3 meters and 2 frame widths (90 mm and 101.6 mm) and two frame sizes (74.7 mm and 125.0 mm).



SPECIFICATION	FRONTURA
MAXIMUM HEIGHT	3300 mm
MAXIMUM WIDTH	1100 mm
QUANTITY PER SET (Min / Max)	1 / 2 leaves
FRAME DEPTH	90 mm / 101.6 mm
SILL HEIGHT	44.45 mm
GLASS THICKNESS	5-12 mm
GLASS GROOVE	12.6 mm
ALUMINIUM THICKNESS	1.5 / 2.0 mm
INSECT SCREEN SYSTEM	Yes
MULTI POINT LOCK	Yes
DIGITAL DOOR LOCK	Yes
SEALANT GAP	5 mm / Side



## CASEMENT DOOR (FRONTURA GRAND SERIES)

Enhance elegance and functionality for your home. Improve noise reduction and prevention of outside disturbances from dust, wind, and rain by using a tight seal system around the entire panel, which supports glass up to a maximum thickness of 24 mm. In addition, fixed lights can be installed all around to further illuminate the interior space while saving energy and creating an open, bright, and visually-pleasing atmosphere. The series supports a wide variety of functions with a maximum height of 3.3 meters, along with two frame widths (90 mm and 101.6 mm). Better protection from the elements and outdoor noises is offered alongside energy conservation, making your home into a true place of peace and safety.

### SPECIFICATION FRONTURA GRAND

MAXIMUM HEIGHT	_____	3300 mm
MAXIMUM WIDTH	_____	1100 mm
QUANTITY PER SET (Min / Max)	_____	1 / 2 leaves
FRAME DEPTH	_____	90 mm / 101.6 mm
SILL HEIGHT	_____	25 / 44.45 mm
GLASS THICKNESS	_____	5-24 mm
GLASS GROOVE	_____	12.70 / 26 mm
ALUMINIUM THICKNESS	_____	1.5 / 2.0 mm
INSECT SCREEN SYSTEM	_____	Yes
MULTI POINT LOCK	_____	Yes
DIGITAL DOOR LOCK	_____	Yes
SEALANT GAP	_____	5 mm / Side







# FIXED LIGHT SYSTEM

Designed to fill the spaces of the home with natural light while offering a view of the outside for a more relaxed atmosphere, product choices can be freely customized for installation alongside different kinds of doors and windows, seamlessly matching with the style of your home. Beyond elegance, the products are strong and durable to ensure confidence in quality and a long service life.

## ORM ALUMINIUM SERIES

### ASIAN TROP

A stylish slim design is delivered with 25 mm frames to better emphasize the glass area for a more spacious feeling along with visual comfort.

### PANO SUIT

Excellent for a true panoramic view, the frame has been designed to support larger panels to make the house appear more expansive with frames available in two sizes (25 mm and 44.5 mm) to suit a variety of use cases.

SPECIFICATION	ASIAN TROP	PANO SUIT
MAXIMUM HEIGHT	3000 mm	4000 mm
MAXIMUM WIDTH	1000 mm	1000 mm
QUANTITY PER SET (Min / Max)	1 / Unlimited leaves	1 / Unlimited leaves
FRAME DEPTH	90 mm / 101.6 mm	90 mm / 101.6 mm
SILL HEIGHT	25 mm	25 / 44.45 mm
GLASS THICKNESS	5-15 mm	5-24 mm
GLASS GROOVE	12.7 / 16.9 mm	12.7 / 26 mm
ALUMINIUM THICKNESS	1.2 / 1.5 mm	1.5 / 2.0 mm
SEALANT GAP	3-5 mm / Side	3-5 mm / Side



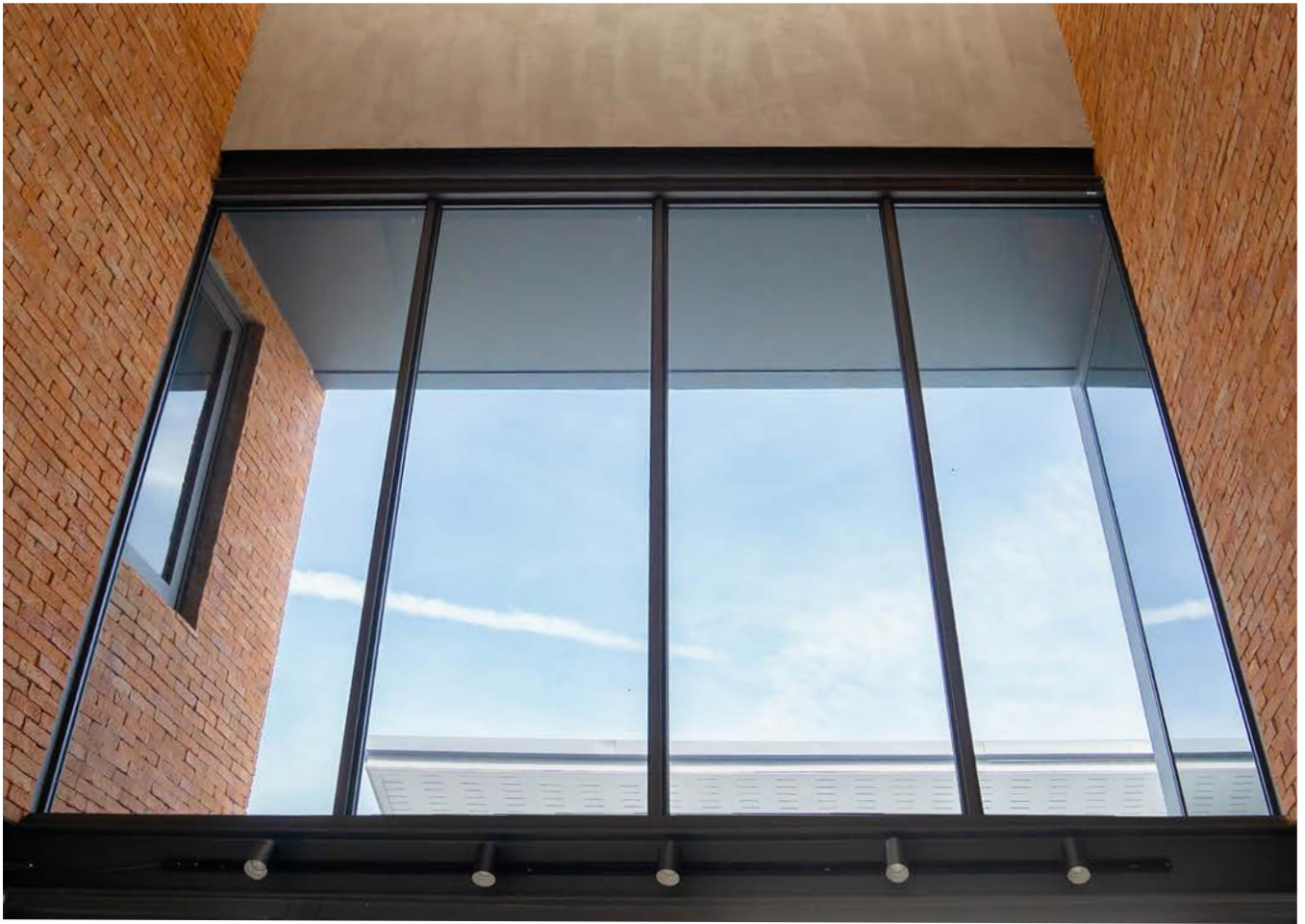


## FIXED LIGHT SYSTEM (ASIAN TROP SERIES)

The 25 mm slim profile makes this series perfect for people who appreciate simplicity and modernity, while maximizing glass area for full lighting and viewing. Remaining strong and effective for protection, the mullion and transom bars are specially designed to make installation easy and provide enhanced water resistance, making them ideal for a variety of home styles that demand beauty alongside functionality. Supporting a maximum door height of 3 m, the frame sizes are available at 90 mm and 101.6 mm, with glass thicknesses supported up to 15 mm to create a seamless transition between interior and exterior spaces.

SPECIFICATION	ASIAN TROP
MAXIMUM HEIGHT	3000 mm
MAXIMUM WIDTH	1000 mm
QUANTITY PER SET (Min / Max)	1 / Unlimited leaves
FRAME DEPTH	90 mm / 101.6 mm
SILL HEIGHT	25 mm
GLASS THICKNESS	5-15 mm
GLASS GROOVE	12.7 / 16.9 mm
ALUMINIUM THICKNESS	1.2 / 1.5 mm
SEALANT GAP	3-5 mm / Side





## FIXED LIGHT SYSTEM (PANO SUIT)

For those who love a panoramic view, the design supports large lighting panels to help fill the interior with natural light, making the house appear more spacious and open. Strong and durable, products are designed with a middle post for ease of installation and superior water prevention capabilities. With a maximum panel height of 4 meters, frame widths are available in two sizes (90 mm and 101.6 mm) with two frame thicknesses: the slim design (25 mm) and the thicker and larger design (44.45 mm) to support a maximum glass thickness of 24 mm.

SPECIFICATION	PANO SUIT
MAXIMUM HEIGHT	4000 mm
MAXIMUM WIDTH	1000 mm
QUANTITY PER SET (Min / Max)	1 / Unlimited leaves
FRAME DEPTH	90 mm / 101.6 mm
SILL HEIGHT	25 / 44.45 mm
GLASS THICKNESS	5-24 mm
GLASS GROOVE	12.7 / 26 mm
ALUMINIUM THICKNESS	1.5 / 2.0 mm
SEALANT GAP	3-5 mm / Side



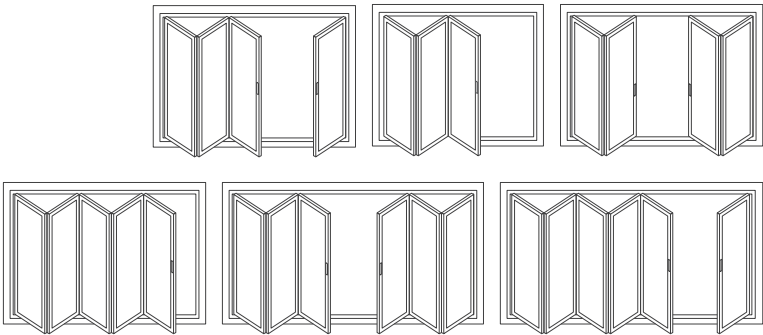
## FOLDING SYSTEM

Designed as a blend of beauty and functionality to allow panels to be opened and closed all the way, home interior spaces can be conveniently partitioned for multiple purposes. Featuring the double hollow technology on the upper railings, superior strength is delivered when compared with ordinary folding systems, and with a maximum height of 3.3 meters, frames are available in two sizes, namely, 90 mm and 101.6 mm. Suitable for both exterior and interior installations, and with a floor-embedded track system, the frame panels are level with the floor (no threshold). This system enhances neatness and beauty while reducing risk of tripping. It can also be used as a garage door.

### SPECIFICATION

MAXIMUM HEIGHT	_____	3300 mm
MAXIMUM WIDTH	_____	900 mm
QUANTITY PER SET (Min / Max)	___ 2 / Unlimited leaves	
FRAME DEPTH	_____	90 mm / 101.6 mm
SILL HEIGHT	_____	5.5 / 42 mm
GLASS THICKNESS	_____	5-10 mm
GLASS GROOVE	_____	12.7 mm
ALUMINIUM THICKNESS	_____	1.5 mm
INSECT SCREEN SYSTEM	_____	Yes
MULTI POINT LOCK	_____	Yes
SEALANT GAP	_____	3-5 mm / Side

### DESIGN OPTIONS







## CURTAIN WALL SYSTEM (STICK WALL)

Open up for a wide view of boundless beauty with a simple yet powerful design. With frame sizes available between 119.6 mm and 150 mm, this system is suitable for buildings or rooms where an open atmosphere is desired. Multiple applications are possible, including building walls, hallways, staircases, and glass rooms where extra strength is required. The system has been calculated to effectively withstand strong winds. The system also features the sleeve transom technology to ease installation and make damage repairs more convenient when compared with ordinary panels.

### SPECIFICATION

MAXIMUM HEIGHT	_____	4600 mm
MAXIMUM WIDTH	_____	1200 mm
QUANTITY PER SET (Min / Max)	___ 1 /	Unlimited leaves
FRAME DEPTH	_____	119.6 / 150 mm
SILL HEIGHT	_____	63.5 mm
GLASS THICKNESS	_____	5-15 mm
GLASS GROOVE	_____	17 mm
ALUMINIUM THICKNESS	_____	2.0 / 2.5 mm
SEALANT GAP	_____	5-10 mm / Side







INTERIOR

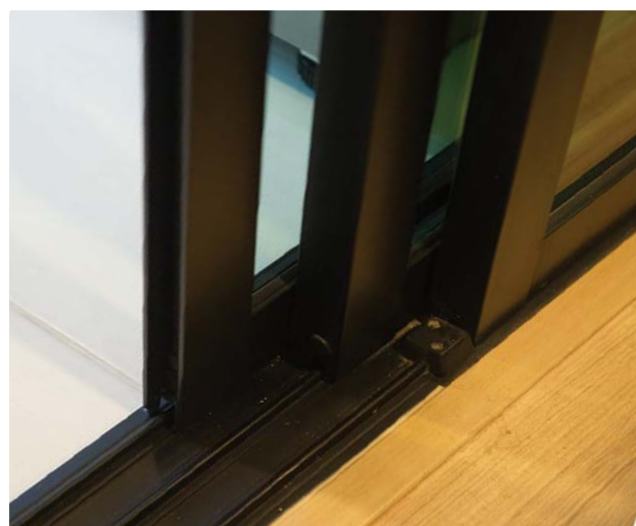


## LIGHT TRACK SLIDING DOOR

Meticulously designed for interior use, with a low bottom track that slopes along evenly with the floor, you can find both comfort and convenience without risk of tripping. Ideal for dividing or partitioning rooms, it also boasts strength thanks to ORM's unique design, ensuring durability and long-lasting performance. With support for a maximum height of 3.3 meters and anywhere between 2 and 6 panels, 90 mm and 101.6 mm frame sizes are available. The system supports single-point lock and multi-point lock systems and digital door lock system to satisfy every usage requirement inside the home.

### SPECIFICATION

MAXIMUM HEIGHT	_____	3300 mm (75 mm sash)
MAXIMUM WIDTH	_____	1100 mm (75 mm sash)
QUANTITY PER SET (Min / Max)	_____	1 / 6 leaves
FRAME DEPTH	_____	90 mm / 101.6 mm
SILL HEIGHT	_____	6.85 mm
GLASS THICKNESS	_____	5-12 mm
GLASS GROOVE	_____	9.5 / 12.7 mm
ALUMINIUM THICKNESS	_____	1.2 / 1.5 / 2.0 mm
INSECT SCREEN SYSTEM	_____	Yes
MULTI POINT LOCK	_____	Yes
DIGITAL DOOR LOCK	_____	Yes
SEALANT GAP	_____	3-5 mm / Side



\*For panels exceeding 2.30 meters in height, we recommend adding stiffeners to enhance strength and stability.





## AIR TRACK SLIDING DOOR

Its elegant, simple design with no bottom rails ensures smooth, uninterrupted passage, enhancing the comfort of everyday life for residents. It can be raised to a height of up to 3 meters, has a frame size of 101.6 mm, and comes with a set of strong and durable rollers, allowing the door to slide smoothly and efficiently, and perfectly partitioning spaces. It is ideal for buildings with frequent entries and exits, as it not only makes the space look airy and open, but also maintains privacy at the same time.



### SPECIFICATION

MAXIMUM HEIGHT	_____	3300 mm
MAXIMUM WIDTH	_____	1100 mm
QUANTITY PER SET (Min / Max)	_____	1 / 4 leaves
FRAME DEPTH	_____	101.6 mm
GLASS THICKNESS	_____	5-12 mm
GLASS GROOVE	_____	12.7 mm
ALUMINIUM THICKNESS	_____	1.5 mm
INSECT SCREEN SYSTEM	_____	Yes
MULTI POINT LOCK	_____	Yes
SEALANT GAP	_____	3-5 mm / Side



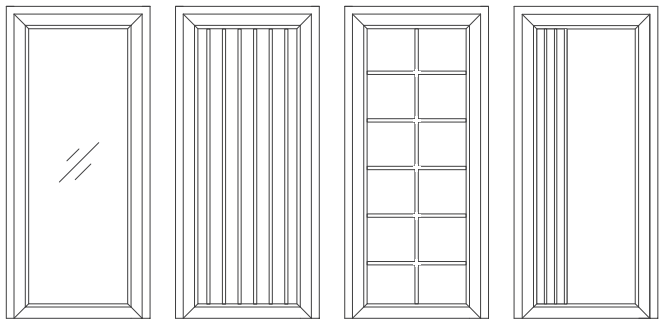
## CASEMENT DOOR

ORM casement doors enhance the privacy of your home with convenient functionality and thoughtful design. Choose from a variety of design styles, including an equally divided Georgian bar pattern, for a touch of elegance or simple, modern lines. They can be installed as single or double doors, and offer flexibility in setting the opening direction, allowing for both “inward” and “outward” openings to permit for more freedom in furniture placement at the entrance. Locking systems choices include a single-point lock system that is easy to install and provides basic security, and a multi-point lock system that distributes force across all positions for maximum stability and enhanced protection against prying. Furthermore, they support digital door locks for enhanced convenience and security when entering and exiting the home. Door heights can be up to 3.3 m and are available in two frame sizes: 90 mm and 101.6 mm.

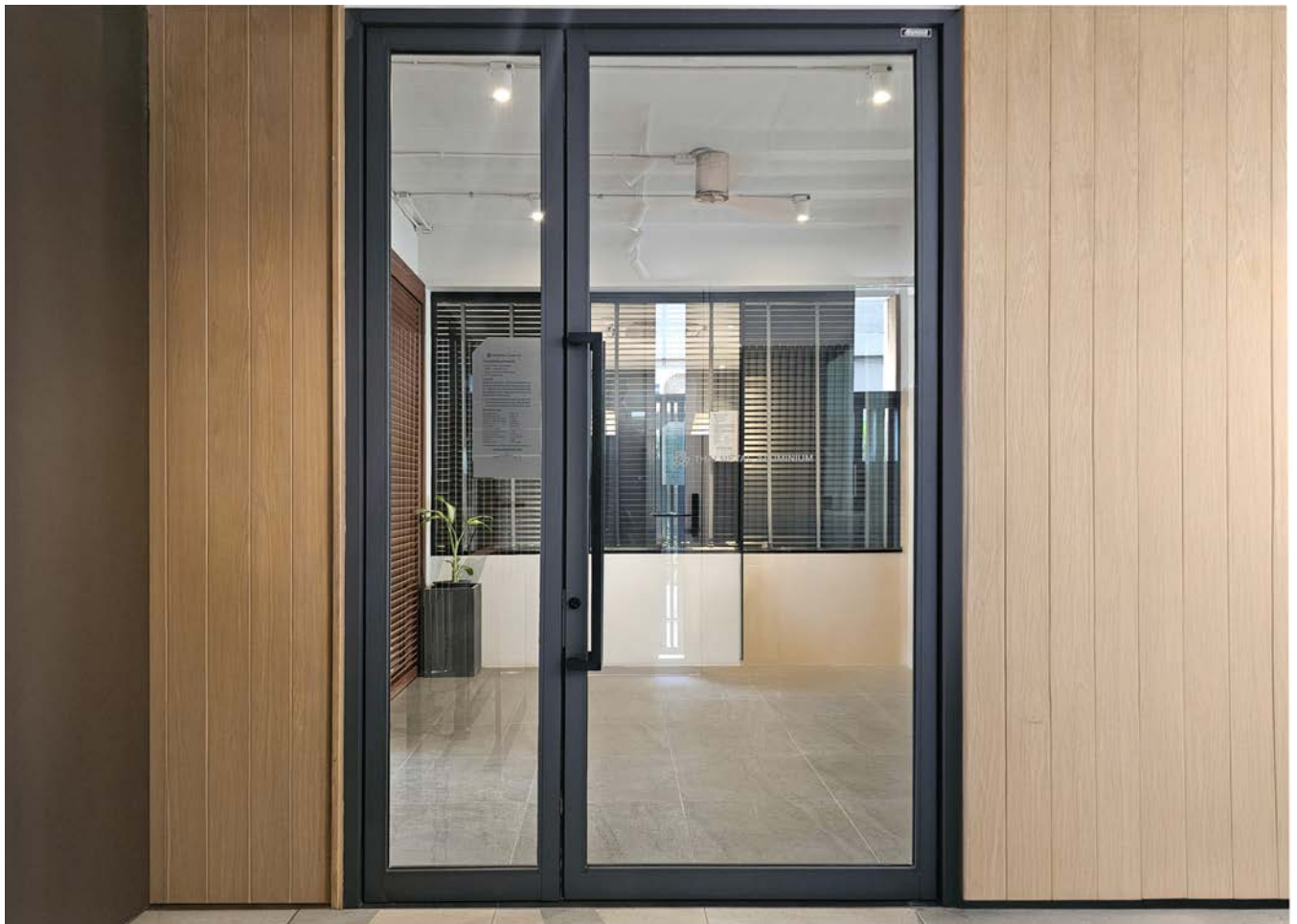
### SPECIFICATION

MAXIMUM HEIGHT	3300 mm
MAXIMUM WIDTH	1100 mm
QUANTITY PER SET (Min / Max)	1 / 2 leaves
FRAME DEPTH	90 mm / 101.6 mm
SILL HEIGHT	44.45 mm
GLASS THICKNESS	5-12 mm
GLASS GROOVE	12.6 mm
ALUMINIUM THICKNESS	1.5 mm
INSECT SCREEN SYSTEM	Yes
MULTI POINT LOCK	Yes
DIGITAL DOOR LOCK	Yes
SEALANT GAP	3-5 mm / Side

### DESIGN OPTIONS







## SWING DOOR

Increase usage convenience with an easy opening and closing system in both directions (180 degrees) by simply pushing the door in or out. This system meets the needs of every location, such as offices, shops, restaurants, and government offices where there is constant access. Convenient and flexible for every use, there is a dust protection system with felt grooves around the door, helping to effectively prevent dust and pollution from outside. The system supports a maximum height of 3.3 meters, and is available with a frame size of 101.6 mm and can be installed with both single-point lock and multi-point lock systems.

For outdoor installations in areas requiring protection against water, wind and dust, a threshold can be added for improved water and dust resistance.

### SPECIFICATION

MAXIMUM HEIGHT	_____	3300 mm
MAXIMUM WIDTH	_____	1100 mm
QUANTITY PER SET (Min / Max)	_____	1 / 2 leaves
FRAME DEPTH	_____	101.6 mm
SILL HEIGHT	_____	13.5 mm
GLASS THICKNESS	_____	5-12 mm
GLASS GROOVE	_____	12.6 mm
ALUMINIUM THICKNESS	_____	1.5 mm
INSECT SCREEN SYSTEM	_____	Yes
MULTI POINT LOCK	_____	Yes
SEALANT GAP	_____	3-5 mm / Side



**Simplicity is the sophistication.**

Leonardo da Vinci







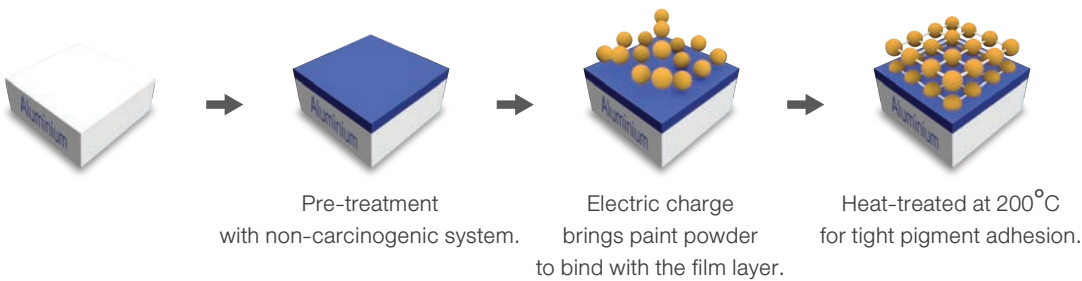
## POWDER COATING PROCESS

The PowderTech™ innovation is the best vertical automatic powder coating technique. Ready to deliver color quality that meets AAMA standards, it can paint workpieces with a maximum length of 7.2 meters, which are baked at 200 degrees to bind the color molecules tightly to the aluminium surface, preventing color from peeling or chipping. As a result, the color is smooth, consistent, and durable in all weather conditions, including sunlight, UV rays, and sea vapors. Being rust-proof, products are supported by a warranty starting at 10 years and up to 25 years, are implemented alongside environmentally-friendly innovations, and are free from carcinogenic substances to ensure safety for users.

“ORM” aluminium is powder-coated according to the standards of the AAMA.

The pigment manufacturer uses a color quality testing system that meets the standards of the United States.

(AAMA: American Architectural Manufacturers Association)



### Powder Painting Process Inspection

#### Test Procedure

#### Test Standards

Adhesion Test	_____	ASTM D3359 or DIN 53151 or ISO 2409
Film Hardness	_____	ASTM D3363
Bend Test	_____	ASTM D522
Impact Test	_____	ASTM D2794
Film Thickness	_____	ASTM D1400
Specular Gloss	_____	ASTM D523
Color Tolerances and Differences	_____	ASTM D2244
Corrosion Resistance (Humidity Resistance)	_____	ASTM D2247, ASTM D4585

\*Random tests during production with a maximum number of test hours of 4,000.



# ORM ALUMINIUM PAINT

## POWDERTECH



Cotton White      Thickness : 60-80 Micron  
Gloss : 90-99%



Aero Metallic Grey      Thickness : 60-80 Micron  
Gloss : 4-8%



Galaxy Grey      Thickness : 60-80 Micron  
Gloss : 3-13%



Champagne Grey      Thickness : 60-80 Micron  
Gloss : 7-17%

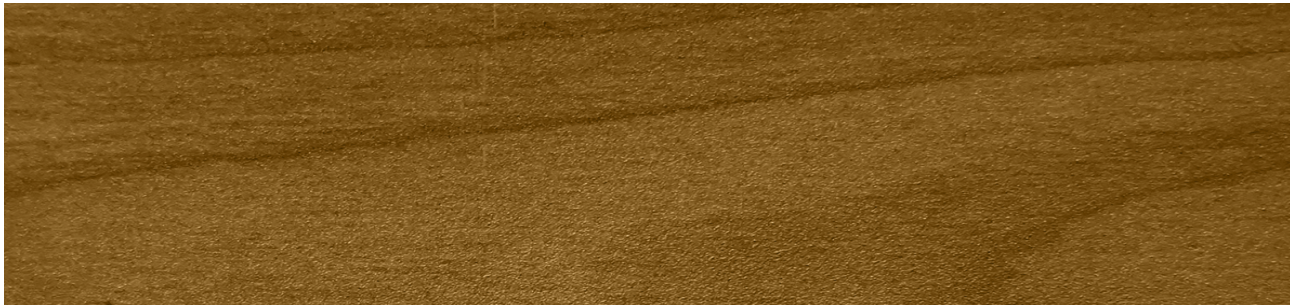


Space Black      Thickness : 60-80 Micron  
Gloss : 25-35%

## WOOD GRAIN PATTERN AL-WOOD



Danish Oak      Thickness : 60-80 Micron



Oriental Teak      Thickness : 60-80 Micron

# QUALITY OF LIVING WITH SAFE & SUSTAINABLE ALUMINIUM



ORM aluminium is 100% non-carcinogenic. Our manufacturing technology prioritizes the safety of residents and all aluminium handlers. Chromium is classified as a carcinogenic substance by the International Institute for Research on Cancer (IARC) and has a high level of environmental toxicity. However, it is widely used in the general aluminium industry due to its lower production costs for surface preparation before plating/painting. Chromium can remain in aluminium pieces and enter the human body through contact or inhalation, causing harmful effects to users. ORM aluminium utilizes the non-carcinogenic innovation "zirconium plus," a safe and non-toxic replacement for chromium, giving confidence that products are safe and free from the hazardous substance, in addition to being environmentally friendly.





## ORM I LOW CARBON ALUMINIUM



ORM aluminium is manufactured by Thai Metal Aluminium Co., Ltd., the first aluminium extruder that has been registered for carbon footprint for organization (CFO) and carbon footprint of product (CFP) by the Thailand Greenhouse Gas Management Organization (TGO), reflecting its commitment to reducing environmental impacts by reducing greenhouse gas emissions by up to 270,000,000 kg CO<sub>2</sub>e per year, or equivalent to planting more than 10,000,000 trees per year.

ORM aluminium's manufacturing process is meticulously designed, with consideration to environmental impact without compromising product performance. This aligns with the concept of sustainable development, making it ideal for government and private sector projects, or homeowners who prioritize environmental conservation. ORM's aluminium is ready to help create a sustainable future for everyone.

PROJECT REFERENCE



Private Residence



Private Residence



Anapana Ladkrabang



Private Residence



Private Residence



Momentia Kallapapruek-Kanchanapisek



Barnyard Khao Yai



HOMU Premium Townhome (Huaikhwang-Latphrao)



Patagonia Pracha-Uthit





PROJECT REFERENCE





Chewathai Hallmark Ladprao - Chokchai 4



Phatara-Thonburi Hospital



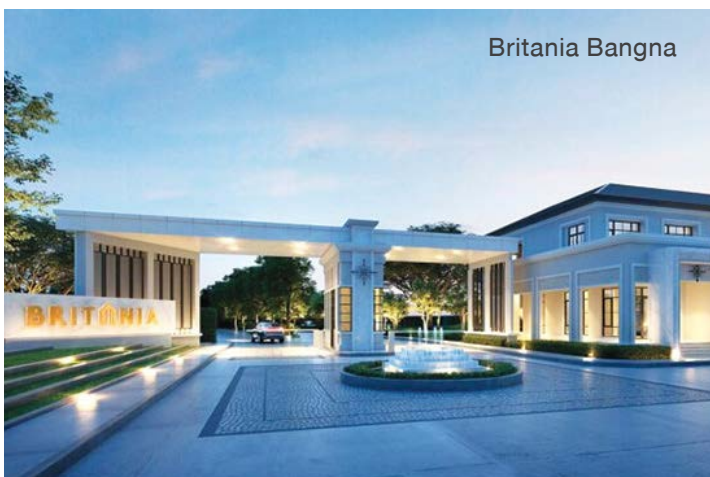
Primesquare Rangsit Klong 2



Phramongkutklao Hospital



Britania Bangna



Central-Sriracha





ORIGINAL  
RELIANCE  
MAGNIFICENT

**Tel :** +66 96 765 8364

**E-Mail :** orm@hcs1981.com

**Website :** [www.ormwindow.com](http://www.ormwindow.com)

**Line :** @ormwindow

**FB :** Aluminium ORM

**YouTube :** ORMWINDOW

**TikTok :** ORMWINDOW

2025/09/03